



MONTHLY GAS UPDATE

OVERVIEW AND PERSPECTIVE

INSIDE THIS ISSUE:

Overview and Perspective	1
Gas Prices at Major Hubs	2
Basis Between Major Hubs	3
U.S. Natural Gas Balance	4
Lower-48 Power Generation	7
U.S. Gas Imports & Exports	8
U.S. Gas Production	9
U.S. Storage Activity	10

ICF International
9300 Lee Highway
Fairfax VA 22031
Phone: 703-934-3000
Fax: 703-934-3740
Email: gbrand@icfi.com

MGU Staff:

Kevin Petak, Vice President
Bruce Henning, Vice President
Harry Vidas, Vice President

Analysts:

Geoffrey Brand
Frank Brock
David Fritsch
Bob Hugman
Julio Manik
Michael Sloan

Passion. Expertise. Results.
Visit us @
www.icfi.com

2007 gas prices - Natural gas prices have averaged about \$6.95 per MMBtu for January to September. With normal weather, Henry Hub prices are projected to increase moderately from current levels due to winter heating load. The average Henry Hub price for 2007 is expected to be about \$7.00 per MMBtu. Market fundamentals will not likely sustain much higher gas prices. Key reasons include:

- ◆ **Gas in storage still pushing record level** – After starting the refill season at 1.60 Tcf or 350 Bcf above the previous five-year average of 1.2 Tcf, April through September storage refill has averaged 9.3 Bcf/d or about 1 Bcf/d greater than last year. U.S. working gas in storage surpassed last year's level in July, but late summer heat curbed injections in August and September. Working gas in storage is still expected to reach 3.5 Tcf by the end of October. High storage levels moderated Henry Hub prices to the \$6.00 to \$6.50 per MMBtu price range for most of September and October.
- ◆ **Gas production growth anticipated**– U.S. drilling activity will likely surpass last year's level. Rocky mountain production has been growing swiftly and pressing available pipeline capacity out the Rockies. The Rocky Mountain area will likely remain constrained until Rockies Express Pipeline begins flowing in early 2008. U.S. gas production is expected to increase to 52.0 Bcf/d in 2007 versus 50.7 Bcf/d in 2006.
- ◆ **Increases in LNG supply** – U.S. LNG imports are expected to average 2.3 Bcf/d in 2007 versus 1.6 Bcf/d in 2006. Higher utilization of existing U.S. terminals is expected throughout 2007, except in June when Cove Point was shut down to bring new capacity online.
- ◆ **Domestic consumption increases mostly due to weather** – U.S. gas consumption in 2007 is projected to average 61.9 Bcf/d versus 59.6 Bcf/d in 2006. Jan-Aug 2007 consumption has been 3.5 Bcf/d greater than the same period of 2006, as a result of more normal winter heating load compared to 2006, which was mild.
- ◆ **Oil prices push higher** - WTI is at \$89.00 per BBL or approximately \$15 per MMBtu. All crude products including residual oil are in excess of \$10 per MMBtu. This creates a relatively high backstop price for natural gas. However, at current oil/gas price difference, there is little remaining incremental switching between fuels.

2008 gas prices – Henry Hub prices for 2008 are projected to average about \$7.40 per MMBtu. Increases in demand will be met with modest increases in LNG imports and domestic production.

- ◆ **Power sector consumption grows** – Power sector gas use in 2008 is projected to be 15.8 Bcf/d versus 15.3 in 2007 as incremental growth in electricity sales will be mostly met with additional gas-fired generation. Normal weather is assumed for October 2007 forward.
- ◆ **Growth in domestic gas production keeps gas prices in check** – Led by significant drilling activity in unconventional resources like shale and coalbed methane, U.S. natural gas production is expected to increase to 54.2 Bcf/d in 2008. Domestic supply is projected to rise by 2.2 Bcf/d over 2007 levels and 3.5 Bcf/d over 2006 levels.
- ◆ **North American LNG remains steady** – U.S. LNG import levels in 2008 are expected to be similar to 2007 levels at an average of 2.3 Bcf/d. Available liquefaction capacity in LNG exporting countries will be the key factor in determining North America LNG imports. New import terminals entering service in 2008 include the 1.5 Bcf/d Cameron LNG in Louisiana, the 1 Bcf/d Costa Azul terminal in Baja Mexico, and the Canaport project in New Brunswick.

Gas Price at Henry Hub (\$/MMBtu)



GAS PRICE AT MAJOR HUBS

Year	Month	Henry										San	
		Hub	NYC	Leidy	Chicago	Opal	S. Cal	MidCon	Alberta	Dawn	Juan	Florida	S. TX
2005	Jan	6.17	12.18	7.34	6.16	5.50	5.74	5.75	5.32	6.31	5.45	6.57	5.74
	Feb	6.09	7.07	6.63	6.09	5.49	5.71	5.75	5.30	6.37	5.47	6.43	5.80
	Mar	6.91	7.73	7.53	6.96	6.25	6.49	6.43	6.12	7.23	6.16	7.23	6.65
	Apr	7.19	7.73	7.95	7.09	6.44	6.68	6.61	6.30	7.45	6.33	7.50	6.90
	May	6.47	6.93	7.00	6.45	5.62	5.85	5.99	5.58	6.69	5.51	6.82	6.32
	Jun	7.17	7.72	7.72	7.08	5.91	6.11	6.39	5.91	7.23	5.77	7.60	7.07
	Jul	7.57	8.20	8.28	7.40	6.34	6.65	6.91	6.11	7.53	6.24	8.37	7.43
	Aug	9.29	10.12	9.93	9.01	7.66	7.98	8.71	7.64	9.24	7.58	10.40	9.13
	Sep	12.11	13.37	13.60	11.01	9.35	9.64	9.80	9.44	11.57	9.17	13.76	11.00
	Oct	13.36	14.50	14.07	12.02	10.46	10.81	10.83	10.57	13.13	10.27	14.78	11.44
	Nov	10.29	10.44	11.30	8.89	7.34	7.58	7.57	7.87	9.45	7.28	10.21	7.62
	Dec	12.98	14.12	13.89	12.60	10.91	11.30	11.07	10.79	12.58	10.77	13.63	11.07
2006	Jan	8.76	9.45	9.32	8.44	7.34	7.66	7.56	7.49	8.83	7.30	9.07	7.72
	Feb	7.62	8.70	8.45	7.40	6.54	6.79	6.74	6.51	7.69	6.52	8.03	7.25
	Mar	6.88	7.66	7.53	6.37	5.74	5.95	5.88	5.73	6.82	5.70	7.14	6.48
	Apr	7.11	7.71	7.81	6.54	5.66	6.00	6.11	5.77	7.19	5.74	7.62	6.88
	May	6.23	6.72	6.94	5.97	5.04	5.30	5.50	5.08	6.42	5.03	6.83	6.04
	Jun	6.26	6.80	6.91	6.13	5.31	5.75	5.72	5.27	6.30	5.43	7.36	6.13
	Jul	6.05	6.94	7.21	5.91	5.24	5.86	5.57	5.09	6.00	5.45	7.11	5.92
	Aug	7.25	7.98	8.19	7.10	6.04	6.76	6.61	5.96	7.10	6.40	8.61	7.00
	Sep	4.95	5.38	4.96	4.89	3.56	4.67	4.41	4.21	5.10	4.33	5.62	4.84
	Oct	5.65	6.16	6.00	5.82	4.56	5.39	5.15	5.13	5.89	5.00	6.33	5.50
	Nov	7.32	7.89	7.76	7.22	4.85	6.20	6.10	6.71	7.64	5.92	7.62	6.62
	Dec	6.83	7.44	7.09	6.90	4.88	6.83	6.31	6.26	7.12	6.35	7.42	6.49
2007	Jan	6.33	8.70	6.84	6.44	5.88	6.36	6.14	5.84	6.50	6.08	6.77	6.22
	Feb	8.06	12.78	9.11	8.02	6.35	7.19	7.09	6.78	7.75	6.90	8.62	7.23
	Mar	7.10	8.45	8.00	6.89	4.94	6.16	6.10	6.41	7.40	5.82	7.34	6.57
	Apr	7.57	8.52	8.45	7.30	4.70	6.93	6.82	6.79	7.88	6.65	8.06	7.31
	May	7.64	8.26	8.31	7.49	3.85	7.07	6.76	6.76	7.97	6.62	7.98	7.48
	Jun	7.40	8.05	8.00	7.26	2.75	6.76	6.58	6.16	7.58	6.45	7.85	7.20
	Jul	6.21	6.80	6.75	6.07	3.72	5.99	5.68	5.10	6.44	5.47	7.23	5.94
	Aug	6.30	6.99	6.73	6.19	3.30	5.82	5.74	4.90	6.27	5.56	8.77	6.11
	Sep	5.99	6.56	6.34	5.64	2.85	4.81	4.81	4.56	6.23	4.67	6.71	5.76
	Oct	6.66	7.22	7.00	6.64	4.01	6.13	5.97	5.91	6.93	5.88	7.04	6.32
	Nov	7.11	7.85	7.55	6.97	3.70	5.95	5.44	6.02	7.47	5.50	7.50	6.06
	Dec	7.40	9.43	7.93	7.46	3.85	6.50	6.24	6.34	7.75	6.15	7.83	6.55
2008	Jan	8.25	13.31	8.69	8.27	4.96	6.50	5.08	6.83	8.48	5.07	8.72	5.10
	Feb	7.78	9.94	8.24	7.80	5.69	6.07	5.86	6.30	8.09	5.82	8.18	6.06
	Mar	7.53	8.59	8.09	7.59	6.28	6.72	6.41	6.54	8.00	6.47	7.98	6.94
	Apr	7.16	7.82	7.57	7.20	6.36	6.75	6.50	6.50	7.49	6.54	7.55	7.03
	May	6.99	7.55	7.35	6.99	6.39	6.80	6.52	6.50	7.27	6.54	7.54	6.88
	Jun	7.43	8.00	7.80	7.39	6.82	7.18	6.95	6.90	7.72	6.98	8.01	7.31
	Jul	8.22	8.84	8.60	8.14	7.57	8.05	7.69	7.67	8.52	7.74	8.84	8.10
	Aug	7.68	8.32	8.07	7.66	7.01	7.39	7.16	7.06	7.99	7.18	8.37	7.55
	Sep	6.80	7.39	7.18	6.81	6.13	6.48	6.33	6.22	7.09	6.29	7.45	6.67
	Oct	6.40	7.08	6.82	6.50	5.76	6.22	6.00	5.88	6.75	5.92	6.81	6.26
	Nov	7.06	7.82	7.54	7.24	6.48	6.98	6.69	6.63	7.48	6.61	7.46	6.92
	Dec	7.13	8.38	7.66	7.32	6.56	7.00	6.81	6.63	7.58	6.67	7.54	6.97
2000 Avg		4.29	5.35	4.59	4.43	3.75	6.31	4.19	3.72	4.42	3.87	4.64	4.23
2001 Avg		3.98	4.61	4.26	4.05	3.42	7.85	3.87	3.56	4.19	3.57	4.32	3.97
2002 Avg		3.34	3.84	3.63	3.32	1.94	3.13	3.14	2.60	3.38	2.65	3.90	3.34
2003 Avg		5.45	6.51	6.98	5.59	4.31	5.07	5.24	4.73	5.79	4.55	5.64	5.38
2004 Avg		5.85	6.82	6.42	5.85	5.18	5.50	5.48	4.98	6.08	5.09	6.16	5.73
2005 Avg		8.80	10.01	9.60	8.40	7.27	7.54	7.65	7.25	8.73	7.17	9.44	8.01
2006 Avg		6.74	7.40	7.35	6.56	5.40	6.10	5.97	5.77	6.84	5.76	7.40	6.40
2007 Avg		6.98	8.30	7.58	6.86	4.16	6.30	6.11	5.96	7.18	5.98	7.64	6.56
2008 Avg		7.37	8.59	7.80	7.41	6.33	6.85	6.50	6.64	7.70	6.48	7.87	6.82

Actual data through August 2007; forecast data thereafter.

BASIS BETWEEN MAJOR HUBS

Year	Month	HH to NYC	HH to Chicago	Alberta to Chicago	Alberta vs. HH	Chicago to NYC	Opal vs. HH	SJ to Social	HH to Florida	S. TX to HH	Dawn to NYC	MidCon vs. HH	Opal to S. Cal	Alberta to S. Cal
2005	Jan	6.01	-0.01	0.84	-0.85	6.02	-0.68	0.28	0.39	0.44	5.87	-0.42	0.24	0.41
	Feb	0.97	0.00	0.79	-0.79	0.97	-0.61	0.24	0.34	0.29	0.70	-0.34	0.23	0.41
	Mar	0.82	0.04	0.84	-0.80	0.77	-0.67	0.33	0.32	0.27	0.50	-0.48	0.24	0.37
	Apr	0.54	-0.10	0.79	-0.89	0.64	-0.74	0.36	0.32	0.29	0.28	-0.58	0.24	0.38
	May	0.46	-0.02	0.88	-0.90	0.48	-0.85	0.34	0.35	0.16	0.24	-0.48	0.23	0.27
	Jun	0.55	-0.09	1.17	-1.26	0.64	-1.26	0.35	0.44	0.10	0.49	-0.77	0.20	0.20
	Jul	0.63	-0.18	1.29	-1.46	0.80	-1.23	0.40	0.80	0.14	0.67	-0.67	0.30	0.53
	Aug	0.83	-0.29	1.37	-1.66	1.11	-1.63	0.40	1.11	0.16	0.88	-0.58	0.32	0.34
	Sep	1.26	-1.10	1.57	-2.67	2.36	-2.76	0.47	1.65	1.11	1.80	-2.31	0.29	0.20
	Oct	1.14	-1.34	1.45	-2.79	2.48	-2.90	0.54	1.42	1.92	1.37	-2.53	0.35	0.24
	Nov	0.15	-1.40	1.02	-2.42	1.55	-2.95	0.30	-0.08	2.67	0.99	-2.73	0.24	-0.30
	Dec	1.14	-0.38	1.81	-2.19	1.52	-2.07	0.53	0.65	1.91	1.54	-1.91	0.39	0.51
2006	Jan	0.70	-0.31	0.95	-1.26	1.01	-1.42	0.37	0.32	1.04	0.62	-1.20	0.33	0.17
	Feb	1.08	-0.22	0.89	-1.11	1.31	-1.08	0.28	0.41	0.37	1.02	-0.88	0.26	0.28
	Mar	0.78	-0.52	0.64	-1.16	1.30	-1.14	0.25	0.26	0.41	0.85	-1.01	0.21	0.23
	Apr	0.61	-0.56	0.77	-1.33	1.17	-1.44	0.26	0.51	0.23	0.52	-0.99	0.34	0.23
	May	0.49	-0.26	0.89	-1.16	0.75	-1.20	0.27	0.59	0.19	0.30	-0.74	0.26	0.22
	Jun	0.54	-0.13	0.86	-0.99	0.67	-0.94	0.32	1.11	0.13	0.50	-0.54	0.44	0.48
	Jul	0.89	-0.14	0.82	-0.96	1.03	-0.81	0.41	1.06	0.13	0.94	-0.48	0.61	0.77
	Aug	0.74	-0.15	1.14	-1.29	0.89	-1.21	0.35	1.37	0.25	0.88	-0.63	0.72	0.80
	Sep	0.43	-0.06	0.67	-0.74	0.49	-1.40	0.34	0.66	0.11	0.28	-0.54	1.12	0.46
	Oct	0.51	0.16	0.69	-0.52	0.35	-1.10	0.39	0.68	0.15	0.27	-0.51	0.83	0.26
	Nov	0.57	-0.10	0.52	-0.61	0.67	-2.47	0.28	0.30	0.70	0.25	-1.22	1.35	-0.50
	Dec	0.61	0.06	0.64	-0.58	0.55	-1.95	0.48	0.59	0.35	0.33	-0.52	1.95	0.57
2007	Jan	2.37	0.11	0.60	-0.49	2.26	-0.45	0.27	0.45	0.11	2.20	-0.19	0.47	0.52
	Feb	4.72	-0.03	1.24	-1.27	4.76	-1.71	0.29	0.56	0.83	5.04	-0.97	0.84	0.41
	Mar	1.36	-0.21	0.49	-0.69	1.56	-2.16	0.34	0.24	0.53	1.05	-1.00	1.22	-0.25
	Apr	0.94	-0.27	0.51	-0.78	1.22	-2.87	0.28	0.49	0.26	0.64	-0.75	2.23	0.13
	May	0.62	-0.15	0.73	-0.88	0.77	-3.79	0.45	0.34	0.16	0.29	-0.88	3.21	0.31
	Jun	0.65	-0.14	1.11	-1.24	0.79	-4.64	0.31	0.45	0.19	0.47	-0.82	4.01	0.60
	Jul	0.59	-0.14	0.97	-1.11	0.74	-2.49	0.52	1.02	0.27	0.36	-0.53	2.27	0.89
	Aug	0.69	-0.11	1.29	-1.40	0.81	-2.99	0.26	2.47	0.19	0.72	-0.55	2.52	0.92
	Sep	0.57	-0.36	1.08	-1.43	0.92	-3.15	0.14	0.72	0.24	0.33	-1.18	1.96	0.25
	Oct	0.56	-0.01	0.73	-0.74	0.58	-2.64	0.25	0.38	0.33	0.29	-0.68	2.12	0.22
	Nov	0.74	-0.14	0.95	-1.09	0.88	-3.41	0.45	0.39	1.05	0.38	-1.67	2.25	-0.07
	Dec	2.03	0.06	1.12	-1.06	1.97	-3.55	0.34	0.43	0.85	1.68	-1.16	2.65	0.16
2008	Jan	5.06	0.02	1.44	-1.42	5.04	-3.29	1.43	0.47	3.15	4.83	-3.17	1.54	-0.34
	Feb	2.16	0.03	1.50	-1.47	2.14	-2.09	0.25	0.41	1.72	1.85	-1.91	0.38	-0.24
	Mar	1.05	0.06	1.05	-0.99	0.99	-1.25	0.25	0.45	0.59	0.59	-1.12	0.44	0.18
	Apr	0.66	0.05	0.71	-0.66	0.61	-0.80	0.21	0.39	0.13	0.33	-0.66	0.39	0.25
	May	0.57	0.00	0.49	-0.48	0.56	-0.60	0.26	0.55	0.11	0.29	-0.47	0.42	0.30
	Jun	0.57	-0.05	0.49	-0.54	0.62	-0.61	0.20	0.57	0.12	0.28	-0.49	0.36	0.29
	Jul	0.63	-0.08	0.47	-0.55	0.70	-0.65	0.31	0.62	0.12	0.32	-0.53	0.48	0.38
	Aug	0.63	-0.02	0.60	-0.62	0.65	-0.68	0.21	0.68	0.13	0.33	-0.52	0.38	0.33
	Sep	0.58	0.01	0.60	-0.59	0.57	-0.67	0.20	0.65	0.13	0.29	-0.47	0.35	0.27
	Oct	0.69	0.10	0.62	-0.51	0.58	-0.64	0.30	0.41	0.14	0.34	-0.40	0.46	0.34
	Nov	0.76	0.19	0.61	-0.42	0.58	-0.57	0.37	0.40	0.14	0.34	-0.37	0.50	0.35
	Dec	1.25	0.19	0.69	-0.50	1.06	-0.57	0.32	0.41	0.16	0.80	-0.32	0.44	0.37
2000	Avg	1.07	0.14	0.71	-0.56	0.93	-0.53	2.44	0.35	0.05	0.94	-0.10	2.55	2.58
2001	Avg	0.63	0.06	0.49	-0.43	0.57	-0.56	4.28	0.33	0.01	0.42	-0.12	4.42	4.29
2002	Avg	0.50	-0.02	0.72	-0.74	0.52	-1.41	0.48	0.56	0.00	0.46	-0.20	1.20	0.53
2003	Avg	1.06	0.14	0.86	-0.72	0.92	-1.14	0.51	0.19	0.07	0.72	-0.21	0.76	0.34
2004	Avg	0.97	0.00	0.87	-0.87	0.98	-0.66	0.41	0.31	0.12	0.74	-0.37	0.31	0.52
2005	Avg	1.21	-0.40	1.15	-1.55	1.61	-1.53	0.38	0.64	0.79	1.28	-1.15	0.27	0.30
2006	Avg	0.66	-0.19	0.79	-0.98	0.85	-1.35	0.33	0.65	0.34	0.56	-0.77	0.70	0.33
2007	Avg	1.32	-0.12	0.90	-1.02	1.44	-2.82	0.32	0.66	0.42	1.12	-0.87	2.14	0.34
2008	Avg	1.22	0.04	0.77	-0.73	1.18	-1.03	0.36	0.50	0.55	0.88	-0.87	0.51	0.21

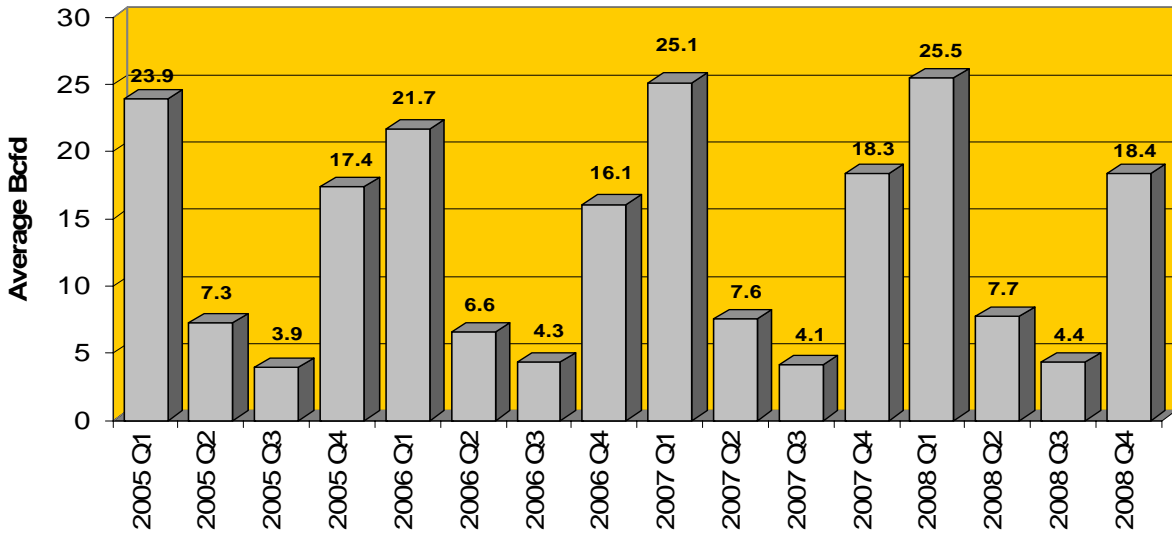
Actual data through August 2007; forecast data thereafter.

U.S. NATURAL GAS BALANCE

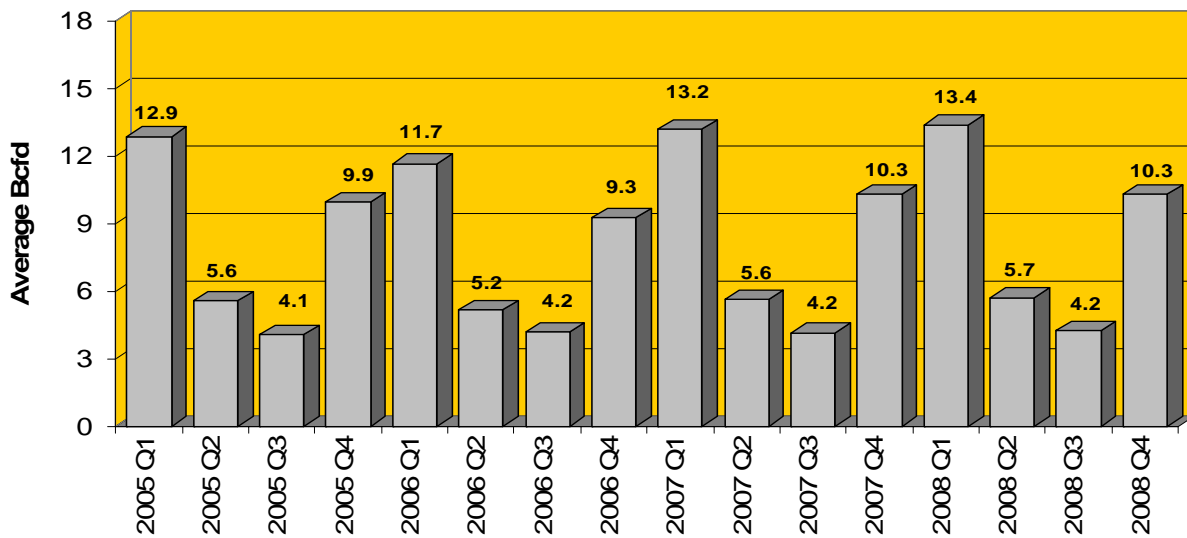
Year	Month	Production	Net Imports	Net Storage Withdraw	LNG Storage Withdraw	Total Supply	End-use Demand	Power Generation Demand	Other Demand	Net Storage Inject	LNG Storage Inject	Total Demand	Balance
2004	Jan	51.6	10.0	26.1	0.5	88.3	69.9	11.7	5.7	-	-	87.2	1.1
	Feb	50.3	8.9	20.7	0.5	80.4	62.1	12.0	5.6	-	-	79.7	0.7
	Mar	51.4	8.3	3.2	0.1	62.9	45.6	10.0	5.4	-	-	61.0	1.9
	Apr	51.3	8.4	-	-	59.7	37.6	9.6	5.2	6.6	0.1	59.2	0.5
	May	51.2	8.3	-	-	59.5	29.6	11.7	5.1	12.2	0.2	58.9	0.6
	Jun	51.1	9.5	-	-	60.7	27.1	14.3	5.2	13.2	0.3	60.1	0.6
	Jul	51.1	10.3	-	-	61.4	26.5	16.9	5.2	12.1	0.2	60.9	0.5
	Aug	51.1	10.1	-	-	61.2	27.4	16.7	5.2	11.1	0.2	60.6	0.6
	Sep	49.2	10.4	-	-	59.6	28.2	14.7	5.0	10.8	0.3	59.0	0.5
	Oct	49.6	10.2	-	-	59.8	34.6	11.6	5.1	8.0	0.1	59.4	0.4
	Nov	50.2	8.9	2.2	-	61.2	45.7	9.6	5.3	-	-	60.6	0.6
	Dec	50.4	10.1	17.9	0.2	78.6	61.6	10.5	5.6	-	-	77.8	0.8
2005	Jan	50.5	9.5	22.6	0.5	83.2	64.9	11.8	5.5	-	-	82.2	1.0
	Feb	50.8	8.4	15.3	0.5	75.0	58.0	10.6	5.7	-	-	74.2	0.8
	Mar	51.0	9.1	9.2	0.1	69.3	52.0	11.0	5.6	-	-	68.6	0.7
	Apr	51.0	8.9	-	-	59.9	37.3	9.5	5.3	7.2	0.1	59.4	0.5
	May	50.9	9.5	-	-	60.4	31.5	10.8	5.2	12.1	0.2	59.9	0.5
	Jun	51.1	9.5	-	-	60.6	27.0	16.9	5.2	10.8	0.3	60.1	0.5
	Jul	50.1	11.0	-	-	61.1	25.6	21.2	5.3	8.3	0.2	60.6	0.5
	Aug	50.1	10.7	-	-	60.8	25.4	22.3	5.4	6.9	0.2	60.2	0.6
	Sep	45.2	10.4	-	-	55.5	24.9	15.8	4.9	9.1	0.3	55.0	0.6
	Oct	45.3	11.1	-	-	56.4	31.8	10.5	5.0	8.6	0.1	55.9	0.5
	Nov	47.6	10.8	0.1	-	58.4	42.0	9.3	5.2	-	-	56.5	1.9
	Dec	49.0	10.3	18.1	0.2	77.7	61.2	10.3	5.7	-	-	77.1	0.5
2006	Jan	49.7	9.6	8.5	0.5	68.4	52.0	10.3	5.3	-	-	67.6	0.9
	Feb	50.1	9.1	17.3	0.5	77.0	59.0	11.9	5.6	-	-	76.5	0.5
	Mar	50.2	9.4	6.5	0.1	66.1	47.6	12.1	5.5	-	-	65.2	0.8
	Apr	50.4	9.6	-	-	60.0	34.2	11.6	5.3	8.5	0.1	59.7	0.3
	May	50.7	10.0	-	-	60.6	29.4	13.4	5.2	11.9	0.2	60.1	0.5
	Jun	50.6	9.8	-	-	60.4	26.1	18.0	5.2	10.4	0.3	60.0	0.5
	Jul	51.0	10.8	-	-	61.8	25.2	25.2	5.4	5.2	0.2	61.2	0.6
	Aug	51.0	10.8	-	-	61.7	25.4	23.8	5.4	6.1	0.2	60.9	0.8
	Sep	51.2	9.4	-	-	60.6	28.3	14.6	5.3	11.9	0.3	60.4	0.3
	Oct	51.3	9.2	-	-	60.5	36.1	14.2	5.4	4.2	0.1	60.0	0.4
	Nov	51.1	7.8	1.6	-	60.5	43.4	10.9	5.5	-	-	59.8	0.7
	Dec	51.2	8.2	11.1	0.2	70.8	53.7	11.3	5.6	-	-	70.6	0.2
2007	Jan	51.1	8.7	22.1	0.5	82.5	62.8	13.7	5.5	-	-	82.0	0.5
	Feb	51.5	9.7	26.1	0.5	87.9	68.4	13.0	6.0	-	-	87.4	0.5
	Mar	51.6	9.7	1.6	0.1	63.0	44.2	10.7	5.7	-	-	60.6	2.4
	Apr	51.7	10.3	-	-	62.0	40.2	11.8	5.5	4.0	0.1	61.7	0.4
	May	51.9	9.6	-	-	61.5	28.6	12.2	5.4	14.8	0.2	61.2	0.3
	Jun	51.9	10.0	-	-	61.9	25.8	17.1	5.5	13.0	0.3	61.6	0.3
	Jul	52.0	10.5	-	-	62.5	25.9	20.4	5.5	10.1	0.2	62.1	0.4
	Aug	51.9	11.3	-	-	63.2	25.6	26.7	5.6	4.6	0.2	62.6	0.6
	Sep	51.8	9.2	-	-	61.0	27.3	18.1	5.4	9.6	0.3	60.6	0.3
	Oct	52.4	8.7	-	-	61.1	35.7	13.2	5.5	6.1	0.1	60.7	0.4
	Nov	53.0	8.8	4.9	-	66.8	47.8	12.7	5.8	-	-	66.3	0.5
	Dec	53.2	8.8	19.8	0.2	82.0	61.8	13.9	5.9	-	-	81.6	0.3
2008	Jan	53.3	9.5	27.0	0.5	90.4	67.7	16.2	5.8	-	-	89.6	0.8
	Feb	53.5	8.4	18.9	0.5	81.2	60.8	13.9	5.9	-	-	80.6	0.6
	Mar	53.6	8.1	8.3	0.1	70.1	49.7	14.2	5.9	-	-	69.8	0.3
	Apr	53.7	8.6	-	-	62.3	39.0	12.4	5.6	4.9	0.1	62.0	0.3
	May	53.8	9.2	-	-	63.0	30.8	13.7	5.4	12.6	0.2	62.7	0.3
	Jun	54.0	9.2	-	-	63.2	26.4	16.7	5.4	14.0	0.3	62.8	0.4
	Jul	54.2	10.3	-	-	64.4	25.2	21.1	5.5	11.9	0.2	64.0	0.5
	Aug	54.3	10.2	-	-	64.5	25.7	21.6	5.6	11.2	0.2	64.1	0.4
	Sep	54.1	9.3	-	-	63.4	28.2	16.1	5.4	13.1	0.3	63.0	0.4
	Oct	54.3	9.1	-	-	63.5	35.5	14.7	5.6	7.1	0.1	63.1	0.4
	Nov	55.0	8.7	3.8	-	67.4	47.8	13.5	5.8	-	-	67.1	0.3
	Dec	55.1	9.2	19.2	0.2	83.7	61.8	15.2	6.0	-	-	83.0	0.6
2000	Avg	52.4	9.4	2.3	-	64.0	46.3	11.8	5.3	-	-	63.4	0.8
2001	Avg	53.3	9.2	-	-	62.5	41.2	12.2	5.4	3.1	-	61.9	0.6
2002	Avg	51.2	8.8	1.3	-	61.2	42.7	12.7	5.3	-	-	60.6	0.6
2003	Avg	51.2	9.0	-	-	60.2	41.7	12.1	5.3	0.5	-	59.6	0.5
2004	Avg	50.9	9.4	-	-	60.3	41.4	12.5	5.3	0.4	-	59.6	0.7
2005	Avg	49.4	9.9	0.1	-	59.5	40.1	13.3	5.3	-	-	58.7	0.7
2006	Avg	50.7	9.5	-	-	60.2	38.3	14.8	5.4	1.2	-	59.6	0.5
2007	Avg	52.0	9.6	0.9	-	62.5	41.0	15.3	5.6	-	-	61.9	0.6
2008	Avg	54.2	9.1	0.2	-	63.5	41.6	15.8	5.7	-	-	63.1	0.4

Estimated data through August 2007; forecast data thereafter. Production includes supplemental gas.

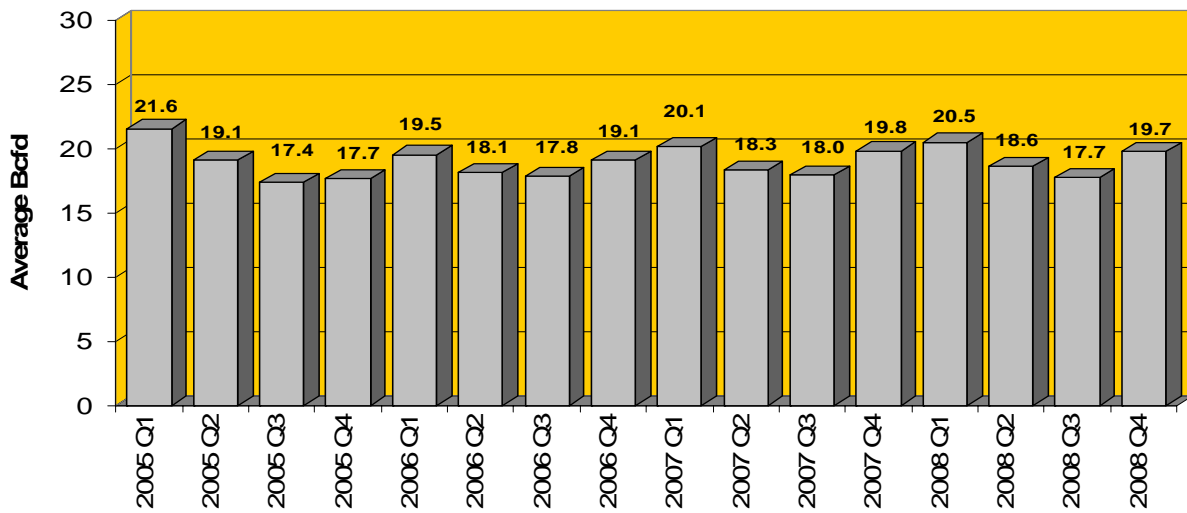
Residential Gas Demand



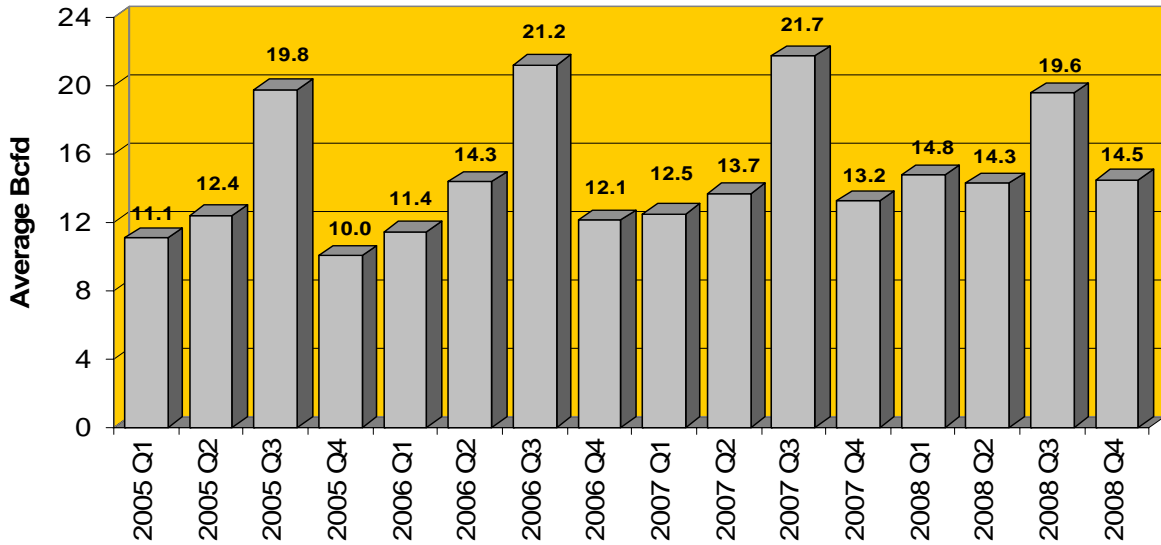
Commercial Gas Demand



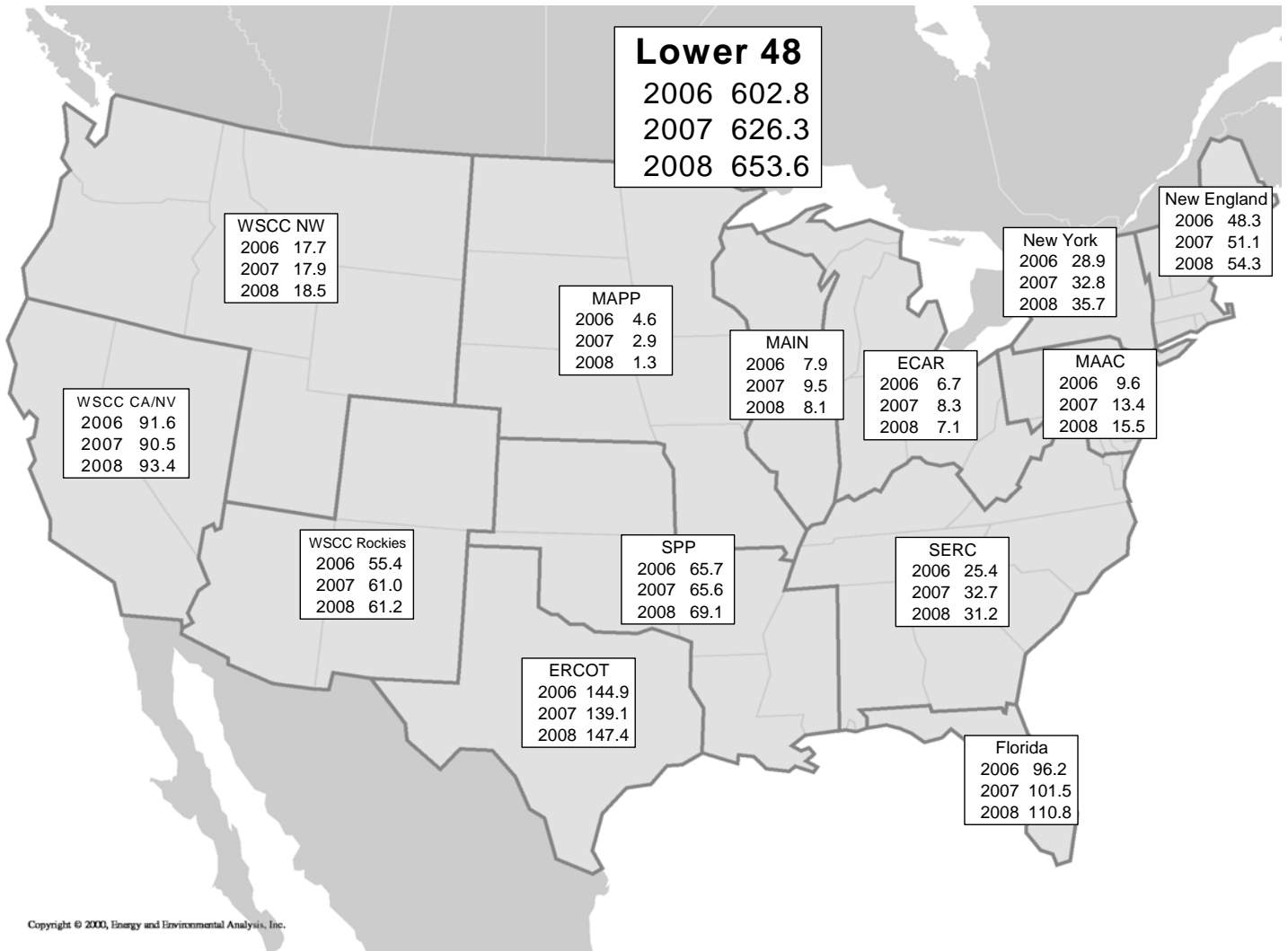
Industrial Gas Demand



Power Generation Gas Demand



Gas-Fired Generation (Billions of kWh per Year)



Copyright © 2003, Energy and Environmental Analysis, Inc.

NOTE: EEA's power generation modeling regions are whole-state approximation of NERC system boundaries.

Reproduction by any means is prohibited

© Copyright 2007 by ICF International

LOWER-48 POWER GENERATION

Year	Month	Gas	Oil	Coal	Nuclear	Hydro	Other	Total	Electricity Sales	Gas Share of Total Generation
2005	Jan	40	4	175	70	24	1	314	308	13%
	Feb	32	3	147	62	26	1	272	269	12%
	Mar	38	9	158	60	27	1	294	291	13%
	Apr	32	4	142	57	28	1	264	262	12%
	May	37	4	146	68	26	1	282	280	13%
	Jun	56	3	168	68	25	1	322	319	17%
	Jul	72	7	187	70	24	1	362	361	20%
	Aug	76	7	190	70	21	1	365	355	21%
	Sep	55	6	172	64	19	1	317	309	17%
	Oct	38	7	164	60	18	1	288	282	13%
	Nov	32	6	155	65	19	1	279	275	12%
	Dec	36	6	178	70	22	1	313	308	11%
2006	Jan	34	2	166	70	26	1	299	294	11%
	Feb	36	2	150	62	27	1	279	276	13%
	Mar	42	4	157	63	28	1	296	292	14%
	Apr	39	2	143	60	29	1	274	272	14%
	May	47	2	154	65	27	1	297	293	16%
	Jun	61	1	160	68	26	1	318	315	19%
	Jul	87	2	189	70	24	1	374	372	23%
	Aug	83	3	187	71	21	1	365	355	23%
	Sep	49	1	161	63	19	1	295	288	17%
	Oct	50	2	164	56	18	1	292	286	17%
	Nov	37	2	159	64	19	1	282	278	13%
	Dec	39	2	172	71	22	1	307	303	13%
2007	Jan	47	1	175	71	26	1	321	315	15%
	Feb	40	6	156	63	27	1	294	290	14%
	Mar	37	4	157	64	28	1	292	289	13%
	Apr	40	1	148	57	29	1	278	275	15%
	May	43	1	151	69	27	1	292	290	15%
	Jun	58	2	165	69	26	1	321	319	18%
	Jul	71	1	184	72	24	1	353	353	20%
	Aug	93	3	193	70	21	1	382	371	24%
	Sep	61	1	172	64	19	1	318	311	19%
	Oct	46	0	162	63	18	1	292	286	16%
	Nov	43	0	162	66	19	1	292	288	15%
	Dec	48	1	179	72	22	1	323	318	15%
2008	Jan	56	2	180	71	26	1	336	329	17%
	Feb	45	1	159	67	27	1	301	297	15%
	Mar	50	1	161	64	28	1	306	302	16%
	Apr	42	0	147	59	29	1	280	277	15%
	May	48	1	156	64	27	1	298	296	16%
	Jun	57	2	166	70	26	2	322	320	18%
	Jul	74	4	189	72	24	2	364	364	20%
	Aug	76	3	190	71	21	2	363	354	21%
	Sep	55	1	168	66	19	2	311	304	18%
	Oct	52	1	167	58	18	2	298	292	18%
	Nov	46	1	163	68	19	2	299	294	15%
	Dec	53	1	181	72	22	2	331	325	16%
2001 Total		449	109	1,862	767	202	8	3,396	3,385	13%
2002 Total		485	77	1,906	781	259	9	3,517	3,468	14%
2003 Total		487	79	1,922	766	268	10	3,532	3,490	14%
2004 Total		502	68	1,928	797	276	14	3,585	3,537	14%
2005 Total		545	67	1,984	784	278	15	3,672	3,618	15%
2006 Total		603	26	1,961	783	288	15	3,676	3,624	16%
2007 Total		626	22	2,005	801	288	16	3,758	3,704	17%
2008 Total		654	18	2,028	802	288	18	3,808	3,755	17%

Estimated data through August 2007; forecast data thereafter.

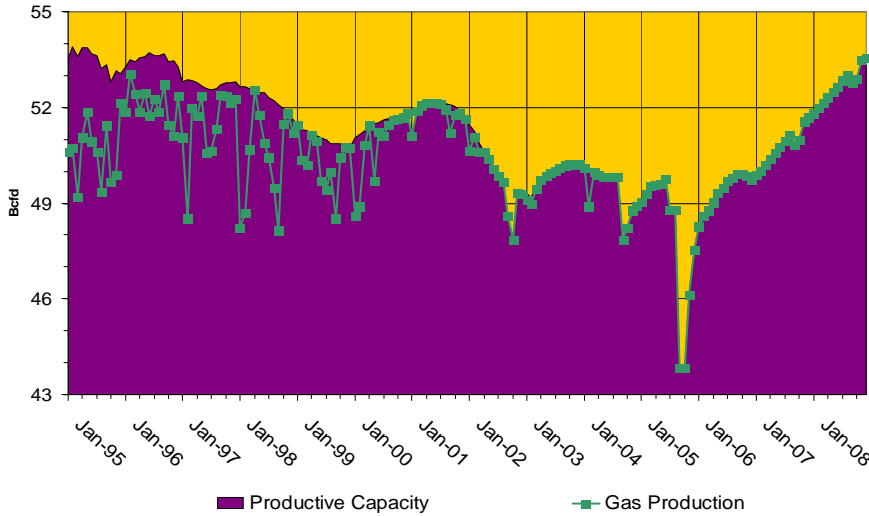
U.S. GAS IMPORTS & EXPORTS

Year	Month	Canadian Imports	Mexican Imports	LNG Imports	Total Imports	Canadian Exports	Mexican Exports	LNG Exports	Total Exports	Net Imports/Exports
2005	Jan	11.6	0.0	1.9	13.5	2.7	1.1	0.2	4.0	9.5
	Feb	11.3	0.0	1.8	13.0	3.1	1.3	0.2	4.6	8.4
	Mar	11.7	0.0	1.6	13.2	3.0	0.9	0.2	4.1	9.1
	Apr	10.3	0.0	1.7	12.1	2.4	0.6	0.2	3.2	8.9
	May	11.0	0.0	1.6	12.6	2.2	0.8	0.2	3.2	9.5
	Jun	11.1	0.0	1.8	12.9	2.1	1.1	0.2	3.3	9.5
	Jul	12.1	0.0	1.7	13.8	1.7	0.9	0.2	2.8	11.0
	Aug	11.8	0.0	1.6	13.4	1.6	0.8	0.2	2.6	10.7
	Sep	11.1	0.0	1.5	12.6	1.3	0.7	0.2	2.2	10.4
	Oct	11.2	0.0	2.0	13.2	1.3	0.6	0.2	2.1	11.1
	Nov	11.6	0.0	1.8	13.3	1.8	0.5	0.2	2.5	10.8
	Dec	11.4	0.0	1.6	13.0	2.1	0.4	0.2	2.6	10.3
2006	Jan	11.1	0.0	1.3	12.4	2.2	0.4	0.2	2.8	9.6
	Feb	10.8	0.0	1.5	12.3	2.4	0.7	0.2	3.2	9.1
	Mar	11.6	0.0	1.2	12.8	2.5	0.7	0.2	3.4	9.4
	Apr	10.5	0.0	1.7	12.3	1.7	0.8	0.2	2.7	9.6
	May	11.1	0.0	2.2	13.2	2.0	1.1	0.2	3.2	10.0
	Jun	11.2	0.0	2.1	13.2	2.0	1.2	0.2	3.4	9.8
	Jul	12.0	0.0	1.9	13.9	1.7	1.2	0.2	3.1	10.8
	Aug	11.9	0.0	1.8	13.6	1.7	1.0	0.2	2.9	10.8
	Sep	11.1	0.0	1.2	12.2	1.9	0.7	0.2	2.8	9.4
	Oct	10.6	0.0	1.3	11.9	1.9	0.7	0.2	2.8	9.2
	Nov	10.1	0.0	1.3	11.5	2.5	1.0	0.2	3.7	7.8
	Dec	10.6	0.0	1.6	12.2	2.9	0.9	0.2	4.0	8.2
2007	Jan	10.5	0.0	1.9	12.3	2.9	0.6	0.2	3.6	8.7
	Feb	11.0	0.0	1.6	12.6	2.1	0.7	0.2	2.9	9.7
	Mar	11.0	0.0	2.6	13.5	2.9	0.7	0.2	3.8	9.7
	Apr	10.4	0.0	3.2	13.6	2.5	0.6	0.2	3.3	10.3
	May	10.1	0.0	3.0	13.1	2.3	1.0	0.2	3.5	9.6
	Jun	10.4	0.0	2.9	13.3	2.1	1.1	0.2	3.4	10.0
	Jul	10.9	0.0	3.0	13.9	2.1	1.0	0.2	3.4	10.5
	Aug	11.2	0.0	2.8	14.0	1.6	0.9	0.2	2.7	11.3
	Sep	10.4	0.0	1.6	12.0	2.0	0.7	0.2	2.9	9.2
	Oct	9.8	0.0	1.7	11.5	2.0	0.6	0.2	2.8	8.7
	Nov	11.1	0.0	1.8	12.8	3.0	0.9	0.2	4.0	8.8
	Dec	11.2	0.0	1.9	13.1	3.4	0.8	0.2	4.4	8.8
2008	Jan	11.1	0.1	2.2	13.4	3.3	0.4	0.2	3.9	9.5
	Feb	10.4	0.1	2.1	12.6	3.6	0.4	0.2	4.3	8.4
	Mar	10.2	0.0	2.0	12.3	3.6	0.4	0.2	4.2	8.1
	Apr	9.6	0.0	2.2	11.8	2.7	0.4	0.2	3.2	8.6
	May	9.9	0.2	2.5	12.6	2.4	0.8	0.2	3.4	9.2
	Jun	9.6	0.2	2.6	12.4	2.2	0.9	0.2	3.3	9.2
	Jul	10.2	0.3	3.1	13.6	2.4	0.7	0.2	3.3	10.3
	Aug	10.2	0.3	2.8	13.3	2.3	0.6	0.2	3.1	10.2
	Sep	9.5	0.4	2.2	12.1	2.0	0.6	0.2	2.8	9.3
	Oct	9.6	0.5	2.1	12.2	2.3	0.6	0.2	3.1	9.1
	Nov	10.0	0.4	2.0	12.3	2.6	0.8	0.2	3.6	8.7
	Dec	10.8	0.4	2.0	13.2	3.0	0.8	0.2	4.0	9.2
2000	Avg	10.7	0.0	0.6	11.4	1.6	0.3	0.2	2.0	9.4
2001	Avg	11.1	0.0	0.6	11.8	2.0	0.4	0.2	2.5	9.2
2002	Avg	11.2	0.0	0.6	11.8	2.1	0.7	0.2	3.0	8.8
2003	Avg	11.2	0.0	1.4	12.5	2.4	1.0	0.2	3.6	9.0
2004	Avg	11.2	0.0	1.7	12.9	2.2	1.1	0.2	3.5	9.4
2005	Avg	11.3	0.0	1.7	13.1	2.1	0.8	0.2	3.1	9.9
2006	Avg	11.0	0.0	1.6	12.6	2.1	0.9	0.2	3.2	9.5
2007	Avg	10.7	0.0	2.3	13.0	2.4	0.8	0.2	3.4	9.6
2008	Avg	10.1	0.2	2.3	12.6	2.7	0.6	0.2	3.5	9.1

Estimated data through August 2007; forecast data thereafter.

U.S. GAS PRODUCTION

Lower-48 Dry Gas Production vs. Dry Gas Productive Capacity



U.S. Rotary Rig Activity

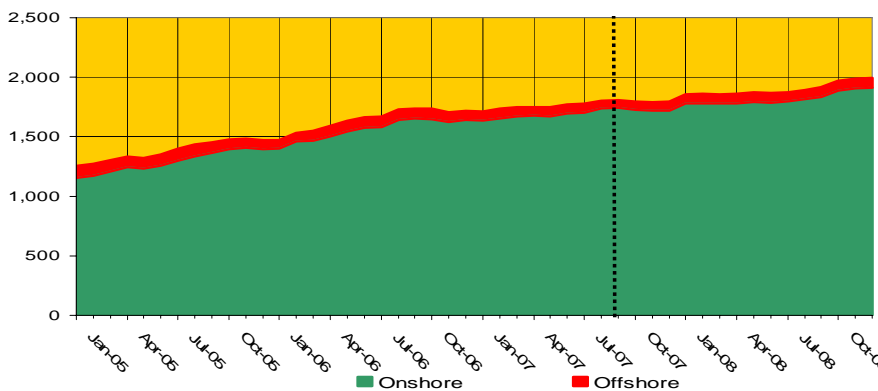
Year	Month	Offshore	Onshore	TOTAL
2005	Jan	103	1152	1,255
	Feb	104	1172	1,276
	Mar	96	1209	1,305
	Apr	93	1241	1,334
	May	91	1229	1,320
	Jun	96	1259	1,355
	Jul	101	1297	1,398
	Aug	103	1333	1,436
	Sep	87	1365	1,452
	Oct	84	1395	1,479
	Nov	80	1406	1,486
	Dec	74	1396	1,470
2006	Jan	71	1402	1,473
	Feb	75	1458	1,533
	Mar	86	1465	1,551
	Apr	90	1503	1,593
	May	93	1542	1,635
	Jun	91	1574	1,665
	Jul	90	1580	1,670
	Aug	93	1639	1,732
	Sep	85	1653	1,738
	Oct	86	1648	1,734
	Nov	82	1624	1,706
	Dec	81	1639	1,720
2007	Jan	80	1634	1,714
	Feb	83	1653	1,736
	Mar	81	1668	1,749
	Apr	74	1676	1,750
	May	75	1673	1,748
	Jun	78	1692	1,770
	Jul	76	1701	1,777
	Aug	70	1734	1,804
	Sep	71	1740	1,811
	Oct	74	1724	1,798
	Nov	77	1716	1,793
	Dec	77	1722	1,799
2008	Jan	78	1777	1,855
	Feb	82	1781	1,862
	Mar	82	1778	1,860
	Apr	82	1779	1,861
	May	83	1792	1,874
	Jun	83	1788	1,870
	Jul	83	1795	1,878
	Aug	83	1812	1,895
	Sep	84	1831	1,915
	Oct	85	1888	1,974
	Nov	85	1904	1,989
	Dec	85	1912	1,997
2000	Avg	140	777	916
2001	Avg	152	1,005	1,157
2002	Avg	112	718	831
2003	Avg	104	927	1,031
2004	Avg	97	1,093	1,190
2005	Avg	93	1,288	1,381
2006	Avg	85	1,561	1,646
2007	Avg	76	1,694	1,771
2008	Avg	83	1,820	1,903

Trends in U.S. Active Rig Counts (Total rigs)

Monthly averages - Baker Hughes

	Aug 2006	July 2007	Aug 2007	One Month Change	12 Month Change	
	2006	2007	2007	Change	Aug 2006 - Aug 2007	(%)
Texas Onshore	774	823	837	14	63	8%
Texas Offshore	13	8	7	-1	-6	-46%
Louisiana Onshore	108	114	115	1	7	6%
Louisiana Offshore	80	68	63	-5	-17	-21%
Oklahoma	195	189	192	3	-3	-2%
Wyoming	107	70	71	1	-36	-34%
Colorado	93	107	113	6	20	22%
New Mexico	93	84	86	2	-7	-8%
Appalachian States	50	57	65	8	15	30%
Total of Above	1,513	1,520	1,549	29	36	2%
Other	219	257	255	-2	36	16%
US total	1,732	1,777	1,804	27	72	4%

U.S. Rotary Rig Activity



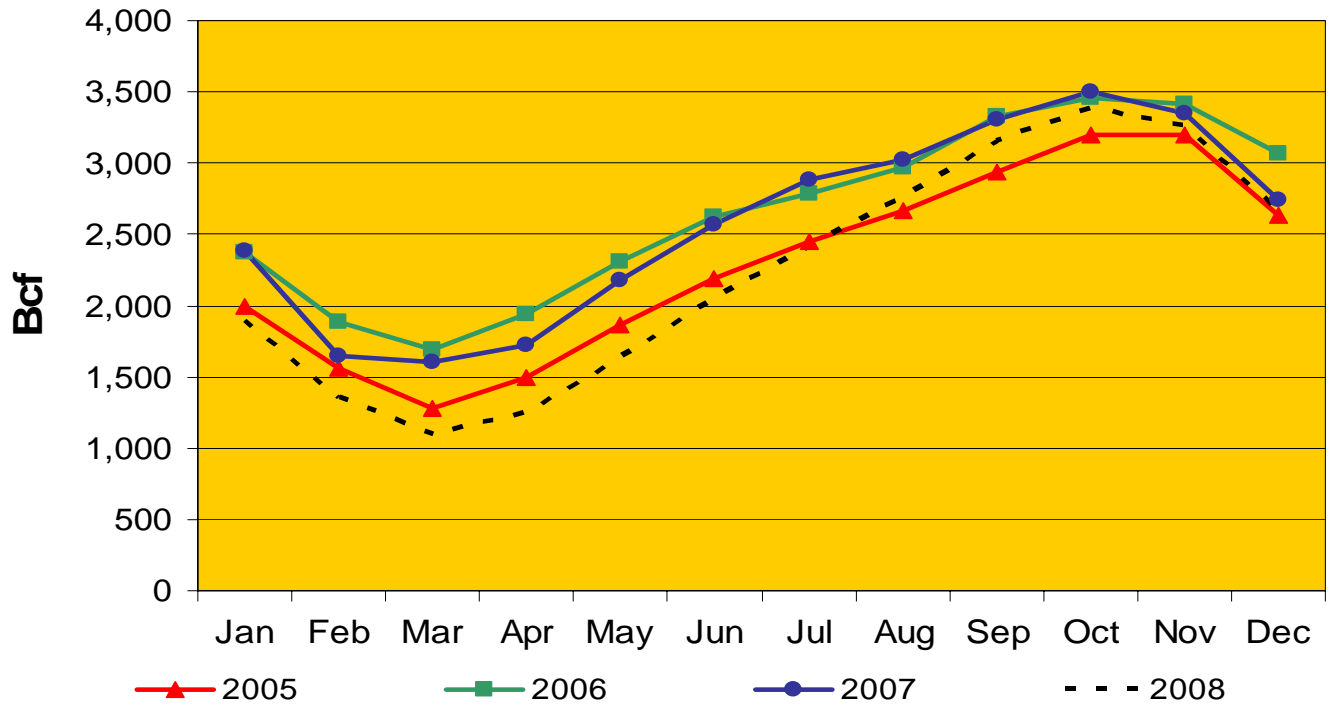
Actual data through Aug. 2007; forecast thereafter.

U.S. STORAGE ACTIVITY

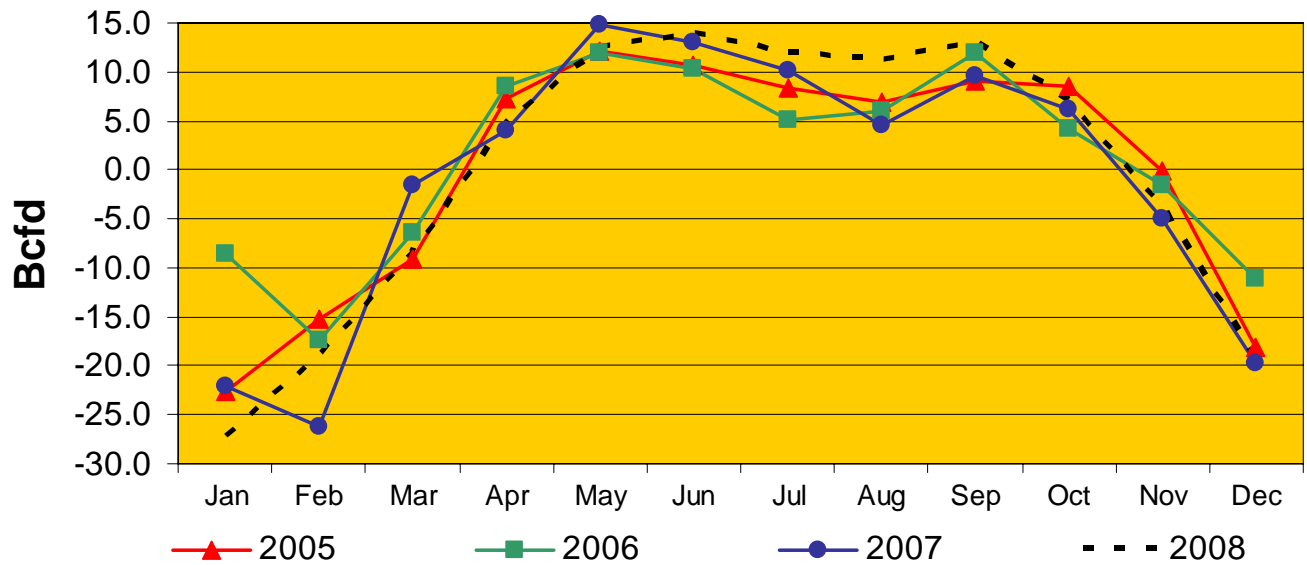
Year Month	Net Storage Injections/Withdrawals (Bcfd)				Working Gas Levels in Storage (Bcf)				Storage Working Gas Capacity (Bcf)				Percent of Storage Full Total U.S.	Henry Hub Price (\$/Nominal/MMBtu)
	East	West	Prod	Total	East	West	Prod	Total	East	West	Prod	Total		
2005 Jan	-14.5	-2.5	-5.6	-22.6	1,101	283	606	1,990	2,128	620	1,151	3,899	51%	6.17
Feb	-10.7	-1.9	-2.6	-15.3	800	229	532	1,561	2,128	620	1,151	3,899	40%	6.09
Mar	-7.7	-0.2	-1.3	-9.2	563	222	492	1,277	2,128	620	1,151	3,899	33%	6.91
Apr	4.0	0.7	2.5	7.2	681	244	567	1,493	2,138	620	1,157	3,915	38%	7.19
May	7.6	1.8	2.7	12.1	918	299	652	1,869	2,138	620	1,157	3,915	48%	6.47
Jun	7.4	1.5	1.9	10.8	1,141	344	707	2,192	2,138	620	1,157	3,915	56%	7.17
Jul	6.8	0.8	0.7	8.3	1,352	368	728	2,449	2,138	620	1,157	3,915	63%	7.57
Aug	6.2	0.4	0.3	6.9	1,544	381	738	2,663	2,138	625	1,157	3,920	68%	9.29
Sep	6.7	1.0	1.4	9.1	1,745	410	779	2,935	2,138	625	1,157	3,920	75%	12.11
Oct	5.1	1.0	2.6	8.6	1,902	441	858	3,201	2,138	625	1,157	3,920	82%	13.36
Nov	-0.9	-0.3	1.1	-0.1	1,875	433	890	3,199	2,146	625	1,160	3,931	81%	10.29
Dec	-11.8	-1.8	-4.4	-18.1	1,508	377	753	2,639	2,146	625	1,160	3,931	67%	12.98
2006 Jan	-6.2	-1.4	-0.9	-8.5	1,316	333	725	2,374	2,146	625	1,160	3,931	60%	8.76
Feb	-11.6	-2.2	-3.5	-17.3	992	271	627	1,889	2,146	625	1,160	3,931	48%	7.62
Mar	-5.3	-1.1	0.0	-6.5	827	236	626	1,689	2,146	625	1,160	3,931	43%	6.88
Apr	4.7	0.9	2.9	8.5	967	263	713	1,943	2,160	625	1,166	3,951	49%	7.11
May	7.4	1.8	2.6	11.9	1,197	320	793	2,311	2,160	625	1,166	3,951	58%	6.23
Jun	6.9	1.4	2.0	10.4	1,405	363	854	2,622	2,160	625	1,166	3,951	66%	6.26
Jul	4.8	0.5	-0.1	5.2	1,553	377	853	2,783	2,160	625	1,166	3,951	70%	6.05
Aug	5.1	0.9	0.1	6.1	1,711	404	856	2,971	2,160	625	1,166	3,951	75%	7.25
Sep	6.5	1.5	3.9	11.9	1,906	448	974	3,329	2,160	625	1,166	3,951	84%	4.95
Oct	1.9	0.6	1.7	4.2	1,966	468	1,026	3,459	2,160	625	1,170	3,955	87%	5.65
Nov	-0.9	-0.5	-0.2	-1.6	1,939	454	1,020	3,412	2,160	625	1,170	3,955	86%	7.32
Dec	-6.9	-2.1	-2.2	-11.1	1,726	388	952	3,067	2,160	625	1,170	3,955	78%	6.83
2007 Jan	-12.9	-3.3	-5.9	-22.1	1,326	286	768	2,380	2,160	630	1,170	3,961	60%	6.33
Feb	-18.0	-1.9	-6.3	-26.1	823	232	593	1,648	2,160	630	1,170	3,961	42%	8.06
Mar	-3.5	0.2	1.7	-1.6	714	240	647	1,600	2,160	630	1,170	3,961	40%	7.10
Apr	1.4	1.0	1.6	4.0	756	270	694	1,720	2,167	633	1,182	3,982	43%	7.57
May	9.2	1.9	3.7	14.8	1,040	329	809	2,179	2,167	633	1,194	3,994	55%	7.64
Jun	8.8	1.6	2.6	13.0	1,304	377	888	2,568	2,167	633	1,199	3,999	64%	7.40
Jul	7.8	0.9	1.5	10.1	1,544	403	933	2,881	2,170	633	1,199	4,002	72%	6.21
Aug	5.4	0.1	-0.9	4.6	1,710	406	906	3,022	2,176	633	1,223	4,032	75%	6.30
Sep	6.4	0.9	2.3	9.6	1,903	431	975	3,309	2,176	633	1,243	4,052	82%	5.99
Oct	3.5	0.9	1.8	6.1	2,013	458	1,029	3,500	2,176	633	1,243	4,052	86%	6.66
Nov	-2.0	-0.3	-2.6	-4.9	1,952	449	950	3,352	2,183	633	1,243	4,059	83%	7.11
Dec	-11.8	-2.9	-5.1	-19.8	1,586	360	792	2,739	2,183	633	1,243	4,059	67%	7.40
2008 Jan	-16.4	-3.1	-7.6	-27.0	1,079	265	557	1,901	2,183	633	1,243	4,059	47%	8.25
Feb	-12.3	-2.6	-4.0	-18.9	722	191	440	1,354	2,183	633	1,243	4,059	33%	7.78
Mar	-5.1	-1.0	-2.2	-8.3	564	159	372	1,095	2,183	633	1,243	4,059	27%	7.53
Apr	2.3	0.5	2.2	4.9	632	173	438	1,243	2,236	635	1,277	4,147	30%	7.16
May	6.9	2.1	3.6	12.6	847	237	548	1,632	2,236	635	1,277	4,147	39%	6.99
Jun	8.7	2.3	3.0	14.0	1,107	307	638	2,052	2,236	635	1,277	4,147	49%	7.43
Jul	8.0	1.8	2.1	11.9	1,357	361	704	2,421	2,236	635	1,277	4,147	58%	8.22
Aug	7.7	1.1	2.3	11.2	1,596	396	775	2,768	2,236	635	1,281	4,151	67%	7.68
Sep	7.4	1.8	3.8	13.1	1,819	451	889	3,159	2,236	635	1,283	4,154	76%	6.80
Oct	4.0	0.9	2.2	7.1	1,942	479	958	3,379	2,236	635	1,311	4,182	81%	6.40
Nov	-2.3	-0.4	-1.0	-3.8	1,872	467	926	3,266	2,236	635	1,311	4,182	78%	7.06
Dec	-12.1	-2.5	-4.6	-19.2	1,498	390	783	2,671	2,236	635	1,311	4,182	64%	7.13
2000 Avg	-1.0	-0.3	-1.0	-2.3	1,335	325	730	2,390	2,053	577	1,140	3,770	63%	4.29
2001 Avg	1.5	0.3	1.2	3.1	1,322	325	723	2,370	2,064	580	1,140	3,785	63%	3.98
2002 Avg	-0.7	0.0	-0.5	-1.3	1,299	323	708	2,330	2,071	590	1,143	3,804	61%	3.34
2003 Avg	0.3	0.0	0.2	0.5	1,083	288	561	1,932	2,082	605	1,149	3,836	50%	5.45
2004 Avg	0.2	0.1	0.1	0.4	1,211	297	679	2,188	2,105	618	1,151	3,874	56%	5.85
2005 Avg	-0.1	0.0	-0.1	-0.1	1,261	336	692	2,289	2,137	622	1,156	3,915	58%	8.80
2006 Avg	0.6	0.0	0.5	1.2	1,459	360	835	2,654	2,157	625	1,165	3,947	67%	6.74
2007 Avg	-0.4	-0.1	-0.4	-0.9	1,389	353	832	2,575	2,170	633	1,206	4,009	64%	6.98
2008 Avg	-0.2	0.1	0.0	-0.2	1,253	323	669	2,245	2,222	635	1,278	4,135	54%	7.37

Data presented for EIA weekly natural gas report regions. Actual data from EIA Natural Gas Monthly through April; May through July 2007 injections/withdrawals estimated from EIA weekly; Recent months working gas levels calculated from monthly levels; forecast data thereafter.

U.S. Working Gas



U.S. Net Injections/Withdrawals



ICF Natural Gas Market Services

To subscribe, please indicate which service/s you are ordering, complete all information below, and have an authorized corporate official sign in the designated space below. Your completed subscription form should be mailed or faxed to:

*Kevin Petak
ICF International
9300 Lee Highway
Fairfax, VA 22031
Telephone: 703-934-3000
Fax: 703-934-3740*

We agree to subscribe to the following services offered by ICF International.

SERVICE	SINGLE USER PRICE	CORPORATE PRICE	ORDERED
	(circle type)		(initial)
Monthly Gas Update Newsletter – 1 year subscription (12 issues)	\$1,500	\$15,000	_____
Gas Market Base Case (Includes 2-hour conference call)	N/A	\$7,200	_____
Gas Market Compass (1 year subscription to quarterly releases of Base Case - 4 cases, quarterly conference calls - 4 calls, and the Monthly Gas Update – 12 issues)	N/A	\$25,000	_____
Output Processor for ICF Gas Market Model Cases	N/A	\$6,000	_____
Gas Market Results for ICF 3P Case	N/A	\$7,200	_____
Gas Market Results for ICF 4P Case	N/A	\$7,200	_____
High Gas Price Case	N/A	\$7,200	_____
Low Gas Price Case	N/A	\$7,200	_____
Gas Market Navigator (Gas Market Compass as defined above, plus quarterly releases of high and low gas price cases <u>or</u> 3P and 4P cases)	N/A	\$55,000	_____
Total Cost of Selected Services			

For variations of these services or customized gas market scenario analysis, contact Kevin Petak.

(Signature of Authorized Representative of Subscriber)

(Subscriber Company Name)

(Name and Title)

(Date)

Address:

Phone / Fax